

Opportunities with Seventh and Augmented Chords

March 2026 Ed Casper

Inspiration

Augmented Chord in C (C+): C E G#

Augmented Seventh Chord in C: C E G# Bb

Piano

Em/E Abdim/Eb Dm/D G+/C# Cm-Gm/c

Early Accordion Lesson Book:

If you see an Augmented Chord, play the Bass 7th or 1-2-3- (Do - Re - Me) for that Chord (in C, C D E)

<p>Augmented Chord in C: C E G# (C+)</p> <p>Augmented Seventh Chord in C: C E G# Bb</p>	<p>C Augmented</p>
---	------------------------

Standard Right-Hand Seventh Chord: C E G Bb

C MAJOR CHORD

C AUGMENTED CHORD

Why doesn't the Right-Hand Augmented clash with the Left-Hand Base Seventh? I.e., G vs G#

Creating the Stradella C7 Bass Chord – without the G

Creating the Stradella C7 Bass Chord – with the G

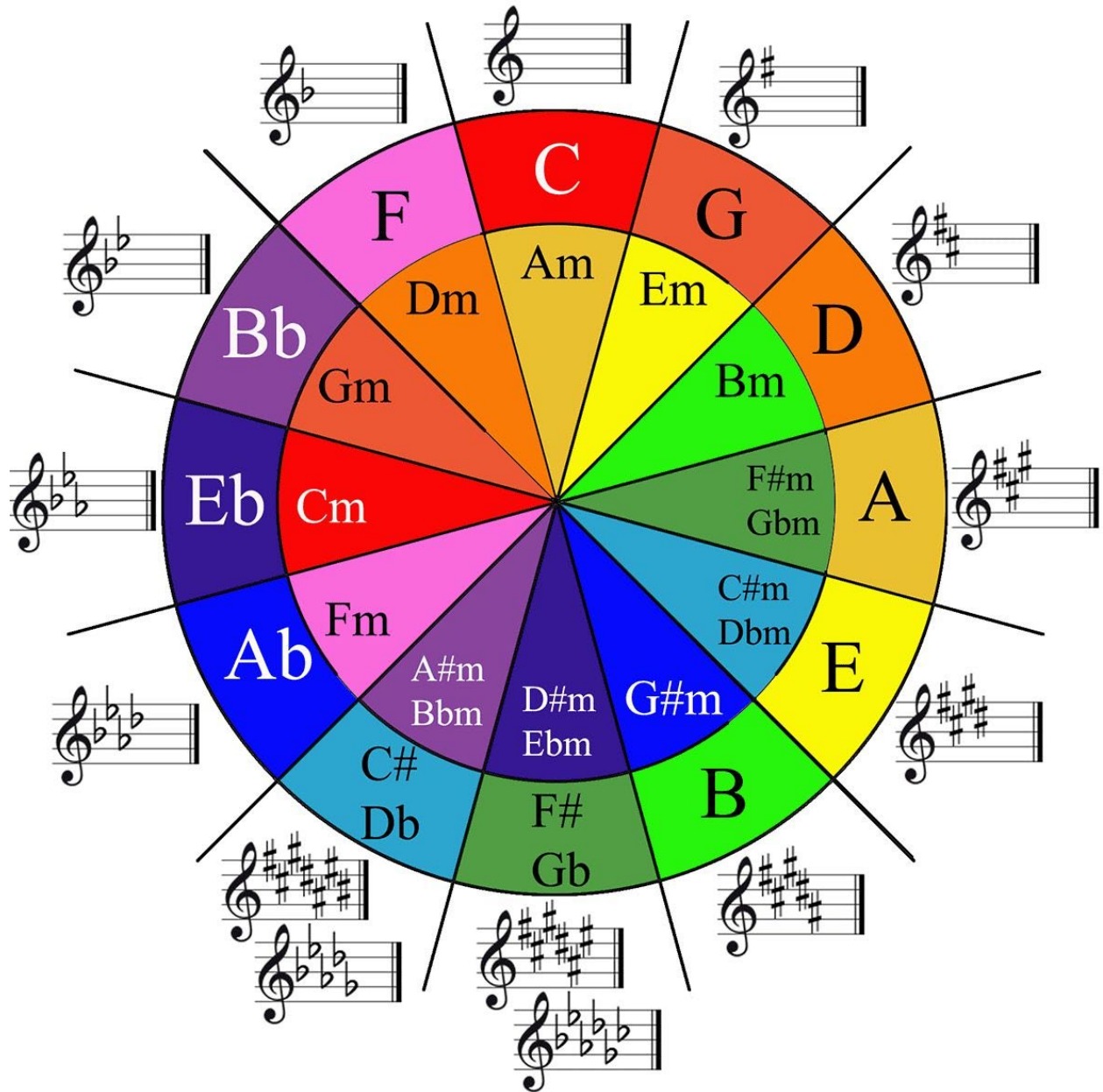
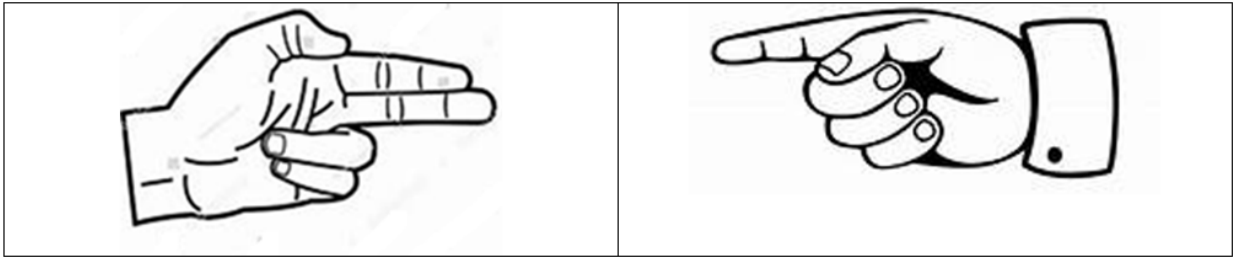
Listen to the difference: L.H. C7 chord – L.H. Gdim chord

Happy-Go-Lucky C7 – R.H. D E Bb; L.H. C 7th or Gdim/C

The diagram illustrates the Stradella bass system with eight rows of notes. The notes are arranged in a grid, with some notes highlighted in a darker circle. The rows are labeled with letters R, M, m, 7, and d on the right side.

G	D	A	E	B	F#	C#	G#	
Eb	Bb	F	C	G	D	A	E	R
F#G#Bb Eb	F#D Bb	C#A# F	G#E# C	D#B# G	A#F# D	E#C# A	B#G# E	M
F#G#Bb Eb	F#D Bb	C#A# F	G#E# C	D#B# G	A#F# D	E#C# A	B#G# E	m
D#B# G#	A#F# D	G#E# C	F#C# A	G#E# C	D#B# G	A#F# D	B#G# E	7
C#G# Eb	G#D# Bb	D#A# F	A#F# C	E#B# G	D#B# G	F#C# A	G#E# C	d

Options and Variations (RIGHT-HAND/LEFT-HAND)



Summertime – Cm – Straight oom-pah Bass

Bass – inspired by Cell Block Tango from movie Chicago

Summertime – Cm – Moving bass line

The image shows three staves of handwritten musical notation for the piece 'Summertime' in C minor. The notation is written in a bass clef and includes various chords and melodic lines. The chords are written above the notes.

Staff 1:

- Chords: G7, Cm; G, F#, F, B, C, Cm, G7/B, Cm/c/d, Eb, C

Staff 2:

- Chords: F#m/f, /G, Ab, /F, D7/D, /G#, G7/c#, /G, Cm/c/d, Eb, G7/B

Staff 3:

- Chords: Cm/d, /Eb, /c, Eb, D7/G#, G7/c#, Cm, [Cm, F7]

Summertime – Cm – Orchestral

The image shows a handwritten musical score for 'Summertime' in C minor, Orchestral style. The score is written on four staves of music, each with a treble clef and a key signature of two flats (Bb and Eb). The notes are written in a simple, clear style, and the chord symbols are handwritten above the notes. The first staff contains the following notes and chords: Cm/A, G7/B, Cm/A, G7/B, Cm/A, G7/B, Cm/A, G7/B. The second staff contains: Cm/A, G7/B, Cm/A, G7/B, Fm/F, /G, /Ab, /F. The third staff contains: D7/D, /G#, G7/C#, /G, G7/A, G7/B, Cm/C, G7/B. The fourth staff contains: Cm/c, G7/B, Cm/c, F7/A, Eb/Bb, D7, G7/C#, Cm/c, [Cm, F7].